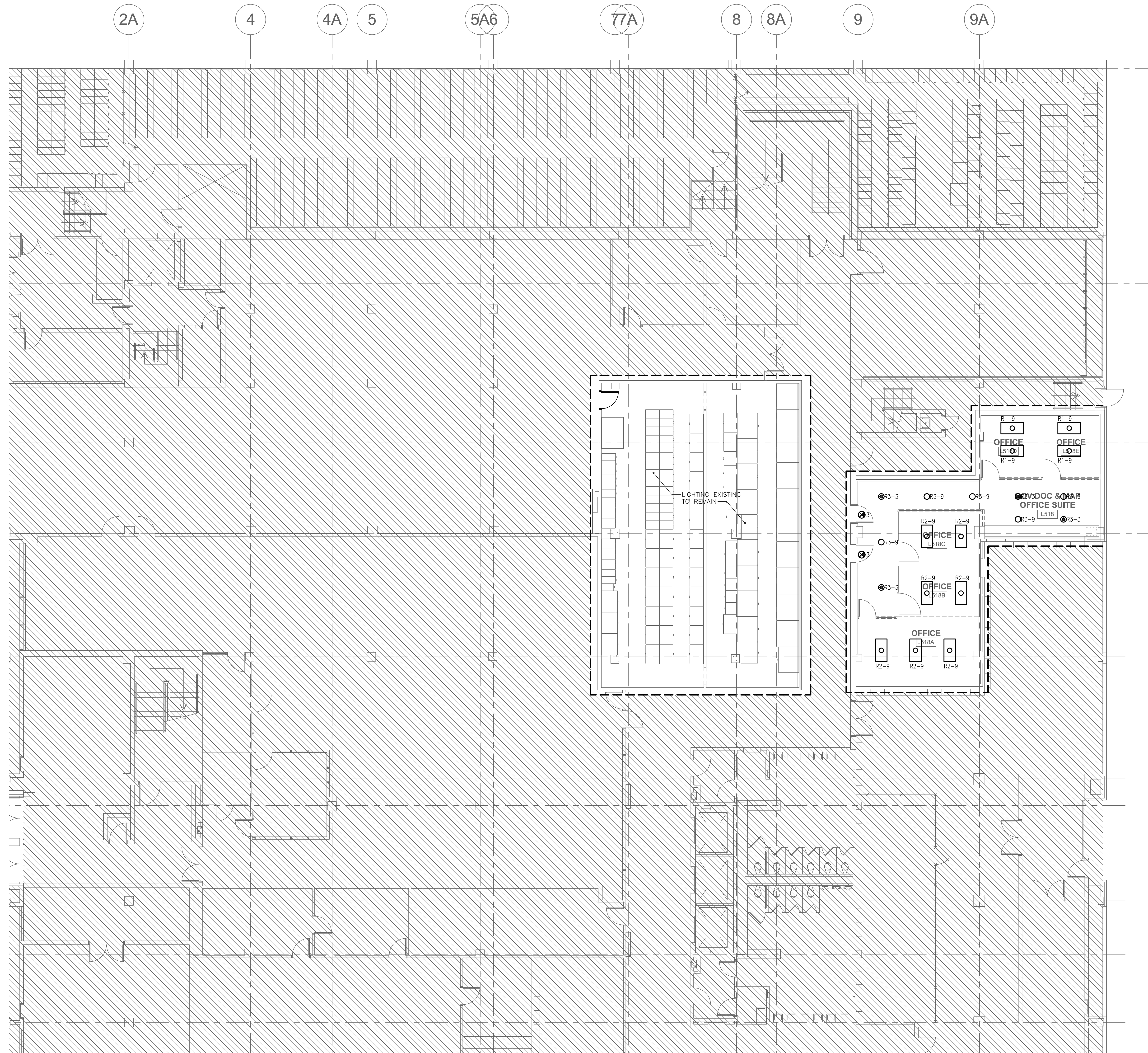
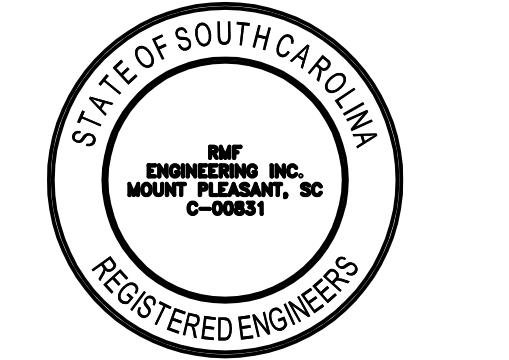


GENERAL NOTES:

1. ALL NORMAL POWER LIGHTING IS FED FROM PANEL B10A UNLESS OTHERWISE NOTED. ALL EMERGENCY POWER IS FED FROM PANEL E20B UNLESS OTHERWISE NOTED.
2. ALL NORMAL POWER LIGHTING CIRCUITS SHALL BE ROUTED THROUGH EXISTING CONTACTS IN METAFIX LIGHTING CONTROL PANEL. SEE DRAWING E1.5B FOR LOCATION.
3. PROVIDE #10 CONDUCTORS FOR RECONNECTING EMERGENCY LIGHTING FIXTURES.



CORPORATE SEAL



A/E SEAL



PROJECT TITLE

University of South Carolina

CAREER CENTER AT THOMAS COOPER LIBRARY
GREENE STREET
COLUMBIA, SC 29201

BID SET

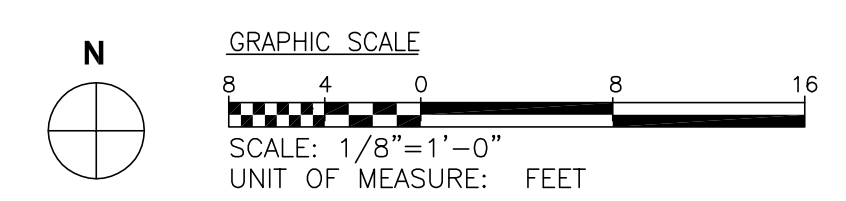
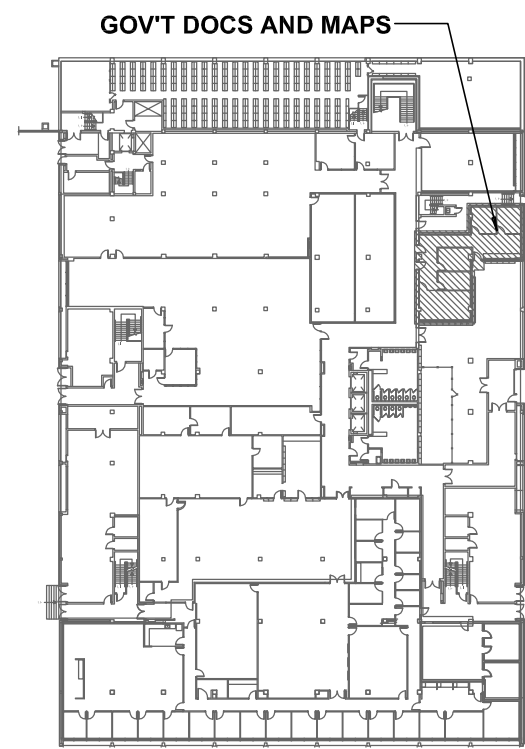
Conditions of Use: This drawing and the design thereon are the property of Quackenbush Architects + Planners. The reproduction, copying, or use of this drawing without the written consent of Quackenbush Architects + Planners is prohibited and any infringement will be subject to legal action.

REVISIONS		
NO.	REVISION	DATE

SHEET INFORMATION	
Date	04.08.13
Project No.	12.130.03
Scale	1/8" = 1'-0"
Drawn By	SIY
Checked By	BAC

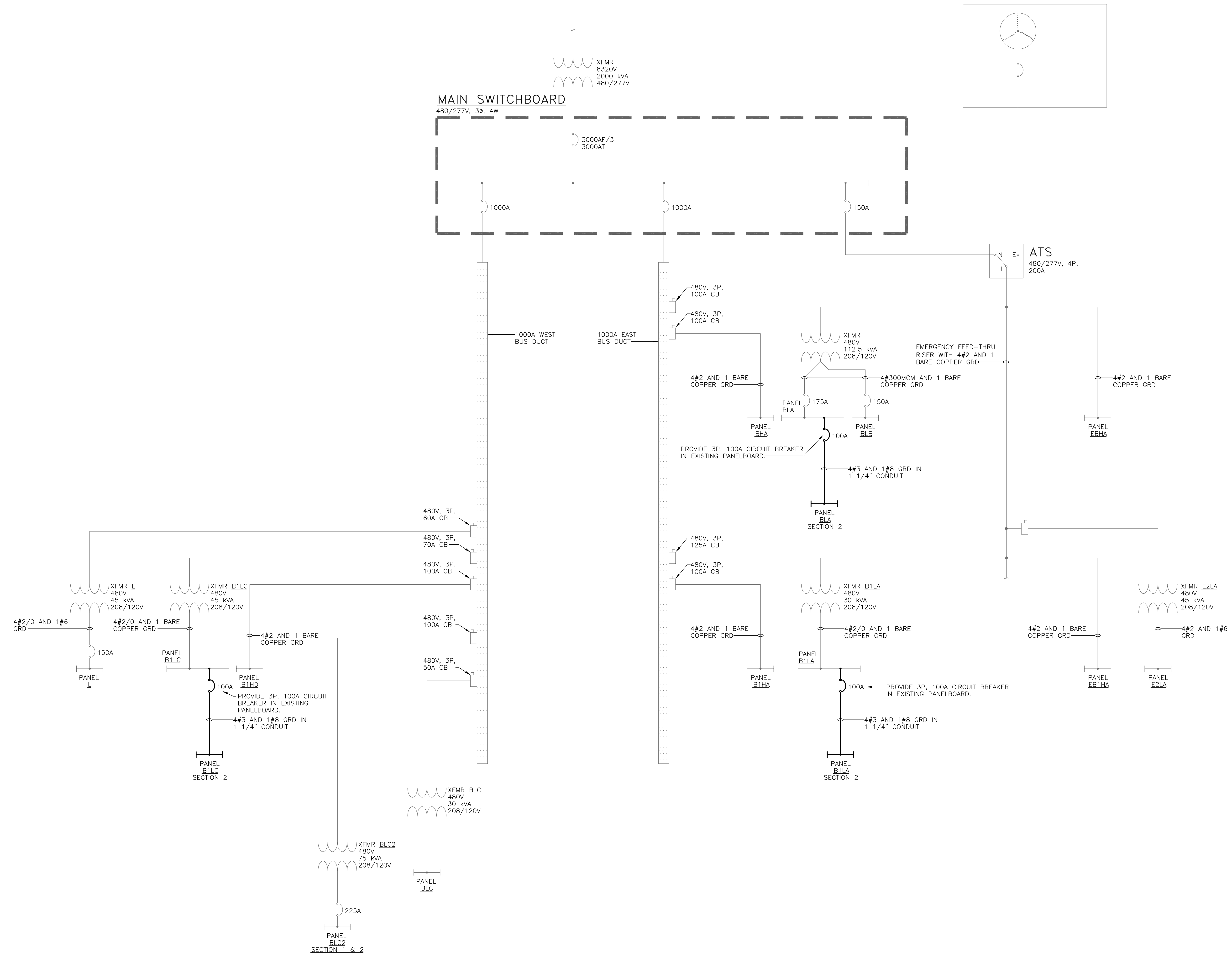
**LEVEL 5
LIGHTING
NEW WORK
FLOOR PLAN**

SHEET NO.
E2.5A



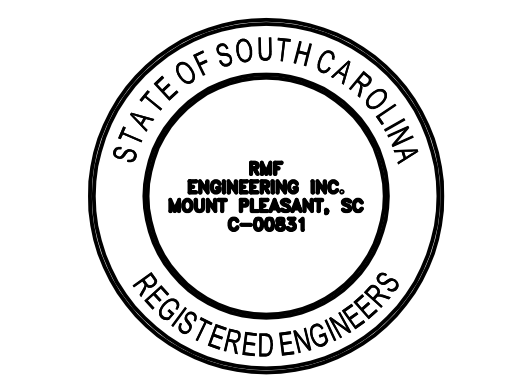
REVISIONS		
NO.	REVISION	DATE

SHEET INFORMATION	
Date	04.08.13
Project No.	12.130.03
Scale	NONE
Drawn By	SIY
Checked By	BAC





CORPORATE SEAL



A/E SEAL



PROJECT TITLE

**University of
South Carolina**

**CAREER
CENTER AT
THOMAS
COOPER
LIBRARY**
GREENE STREET
COLUMBIA, SC 29201

BID SET

Conditions of Use: This drawing and the design thereon are the property of Quackenbush Architects + Planners. The reproduction, copying, or use of this drawing without the written consent of Quackenbush Architects + Planners is prohibited and any infringement will be subject to legal action.

REVISIONS		
NO.	REVISION	DATE

SHEET INFORMATION	
Date	04.08.13
Project No.	12.130.03
Scale	NONE
Drawn By	SIY
Checked By	BAC

TITLE
**ELECTRICAL
LIGHTING
FIXTURE
SCHEDULE**

SHEET NO
E6.1

LIGHTING FIXTURE SCHEDULE

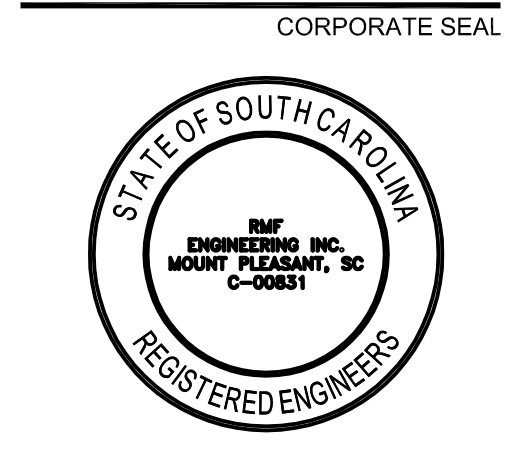
FIXTURE TYPE	DESCRIPTION	LOUVER/ LENS	LAMPS				BALLAST		VOLTAGE	INPUT WATTAGE	MOUNTING	REMARKS	MANUFACTURER	FIXTURE TYPE
			TYPE	WATTAGE	QTY.	COLOR TEMP.	TYPE	QTY.						
R1	2'x4' RECESSED FLUORESCENT TROFFER	ACRYLIC	T8	25	2	3500°K	ELECTRONIC	1	277	62	RECESSED	-	LITHONIA #2SPB-G-2-32-A12125-MVOLT-GE10PS WILLIAMS #EPG-S23-232-FA12125-EB2-UNV COLUMBIA #APS24-232G-FSA12-EPU	R1
R1D	2'x4' RECESSED DIMMABLE FLUORESCENT TROFFER	ACRYLIC	T8	25	2	3500°K	ELECTRONIC	1	277	62	RECESSED	DIMMING BALLAST TO 1%	LITHONIA #2SPB-G-2-32-A12125-MVOLT-DIM WILLIAMS #EPG-S23-232-FA12125-DIM-UNV COLUMBIA #APS24-232G-FSA12-DIM	R1D
R1U	2'x4' RECESSED FLUORESCENT TROFFER WITH UL 924 RELAY	ACRYLIC	T8	25	2	3500°K	ELECTRONIC	1	277	62	RECESSED	PROVIDE UL924 RELAY	LITHONIA #2SPB-G-2-32-A12125-MVOLT-GE10PS WILLIAMS #EPG-S23-232-FA12125-EB2-UNV COLUMBIA #APS24-232G-FSA12-EPU	R1U
R2	2'x4' RECESSED FLUORESCENT TROFFER	ACRYLIC	T8	25	3	3500°K	ELECTRONIC	1	277	93	RECESSED	-	LITHONIA #2SPB-G-3-32-A12125-MVOLT-GE10PS WILLIAMS #EPG-S24-332-FA12125-EB3-UNV COLUMBIA #APS24-332G-FSA12-3EPU	R2
R3	6" DIAMETER RECESSED OPEN DOWNLIGHT	-	CFL	26	2	3500°K	ELECTRONIC	1	277	56	RECESSED	-	GOTHAM #AF-2/26DTT-6XX-MVOLT WILLIAMS #PH60-226Q-CS-EB2-UNV LITHONIA #LF6N-2/26DTT-F602A-MVOLT	R3
R4	2'x4' RECESSED FLUORESCENT TROFFER	ACRYLIC	T8	25	4	3500°K	ELECTRONIC	1	277	114	RECESSED	-	LITHONIA #2SPB-G-4-32-A12125-MVOLT-GE10PS WILLIAMS #EPG-S24-432-FA12125-EB4-UNV COLUMBIA #APS24-432G-A12-4EPU	R4
R5	6" DIAMETER RECESSED OPEN DOWNLIGHT	-	CFL	18	2	3500°K	ELECTRONIC	1	277	42	RECESSED	-	GOTHAM #AF-2/18DTT-6XX-MVOLT WILLIAMS #PH60-218Q-CS-EB2-UNV LITHONIA #LF6N-2/18DTT-F602A-MVOLT	R5
S1	4' SURFACE FLUORESCENT INDUSTRIAL STRIP	-	T8	25	2	3500°K	ELECTRONIC	1	277	62	SURFACE	-	LITHONIA #C-2-32-MVOLT-GE10PS WILLIAMS #76-4-232-EB2-277 COLUMBIA #K4-232-EU	S1
⊙	LED EXIT SIGN	-	LED	-	-	-	ELECTRONIC	1	277	-	SURFACE	PROVIDE NUMBER OF FACES AND ARROWS AS SHOWN ON THE FLOOR PLANS.	LITHONIA #LE-S-X-R-120/277 WILLIAMS #EXIT/CA-XI-R-AF-BLK-AC DUAL LITE #SE-X-R-B	⊙

LIGHTING FIXTURE SCHEDULE NOTES:

- REFER TO PROJECT MANUAL SPECIFICATIONS FOR EQUIPMENT/ PRODUCT PERFORMANCE CRITERIA.
- MANUFACTURERS LISTED IN THE LIGHTING FIXTURE SCHEDULE ARE USED TO ESTABLISH A BASIS OF DESIGN FOR QUALITY AND PERFORMANCE. PROVIDE MANUFACTURERS LISTED OR AN APPROVED ALTERNATE EQUAL MANUFACTURER.



CORPORATE SEAL



A/E SEAL

PROJECT TITLE

University of South Carolina

CAREER CENTER AT THOMAS COOPER LIBRARY
GREENE STREET
COLUMBIA, SC 29201

BID SET

Conditions of Use: This drawing and the design thereon are the property of Quackenbush Architects + Planners. The reproduction, copying, or use of this drawing without the written consent of Quackenbush Architects + Planners is prohibited and any infringement will be subject to legal action.

REVISIONS	
NO.	DATE

SHEET INFORMATION	
Date	04.08.13
Project No.	12.130.03
Scale	NONE
Drawn By	SIY
Checked By	BAC

ELECTRICAL PANEL SCHEDULES

PANEL NO.: BHA
USAGE: LIGHTING
LOCATION: LV 5 ELEC RM B36
PHASES: 3
L-L VOLTS: 480
L-G VOLTS: 277
BUS AMPS: 225
AIC RATING: EXISTING
MAIN CB AMPS: MLO

CLIENT: UCS TCL
MOUNTING SURFACE: LIGHTING & APPLIANCE
PANEL TYPE: BAC
ENGINEER: BAC
RMF PROJECT NO.: 312292 AD

PANEL NOTES:
1. EXISTING GE NHB PANELBOARD.

CND SIZE	CND SIZE	PHASE/NEUT. SIZE	CKT AMPS	LOAD DESCRIPTION	CB BKR. RATING (AMPS)/POLES	CIRCUIT NUMBER A B C	CB BKR. RATING (AMPS)/POLES	LOAD DESCRIPTION	CKT AMPS	PHASE/NEUT. SIZE	CND SIZE	CND SIZE
			0.00	EX LTG	201	1 A 2	201	LTG-OFFICES	4.75	#12	#12	3/4"
			0.00	EX LTG	201	3 B 4	201	EX LTG	0.00			
			0.00	EX LTG	201	5 C 6	201	LTG-CORRIDOR	1.82	#12	#12	3/4"
			0.00	EX LTG - WAREN OFFICE	201	7 A 8	201	LTG-CONFERENCE 102	2.01	#12	#12	3/4"
#12	#12	3/4"	4.26	LTG-OFFICES	201	9 B 10	201	LTG-OFFICES	2.58	#12	#12	3/4"
			0.00	EX LTG	201	11 C 12	201	LTG-OFFICES	2.32	#12	#12	3/4"
			0.00	EX NEW LTG - JW102B	201	13 A 14	201	SPARE	0.00			
			0.00	SPARE	201	15 B 16	201	EX LTG-MECH RM 635	0.00			
			0.00	EX NEW LTG - JW102B	201	17 C 18	201	SPARE	0.00			
			0.00	SPARE	201	19 A 20	201	SPARE	0.00			
			0.00	SPARE	201	21 B 22	201	EX METASYS LTG PNL	0.00			
			0.00	SPACE	-	23 C 24	-	SPACE	0.00			
			0.00	SPACE	-	25 A 26	-	SPACE	0.00			
			0.00	SPACE	-	27 B 28	-	SPACE	0.00			
			0.00	SPACE	-	29 C 30	-	SPACE	0.00			
			0.00	SPACE	-	31 A 32	-	SPACE	0.00			
			0.00	SPACE	-	33 B 34	-	SPACE	0.00			
			0.00	SPACE	-	35 C 36	-	SPACE	0.00			

LOADS	CONNECTED (KVA)	DIVERSITY FACTOR %	DEMAND (KVA) %
LIGHTING	4.91	100%	4.91
HVAC COOLING*	0.00	100%	0.00
HVAC HEATING*	0.00	100%	0.00
MOTORS	0.00	100%	0.00
KITCHEN EQUIPMENT	0.00	100%	0.00
RECEPTACLES (1st 10 KVA)	0.00	100%	0.00
RECEPTACLES (>10 KVA)	0.00	50%	0.00
MISCELLANEOUS	0.00	100%	0.00

* LOAD VALUES HAVE BEEN ADJUSTED TO REFLECT WORST CASE LOADING FOR EQUIPMENT WITH BOTH COOLING AND HEATING SYSTEMS.

PHASE LOADING			
PHASE	CONNECTED (KVA)	DEMAND (KVA)	DEMAND (AMPS)
A	1.87	1.87	6.76
B	1.89	1.89	6.83
C	1.15	1.15	4.14
A,B,C TOTALS	4.91	4.91	5.91

PANEL NO.: EBHA
USAGE: LIGHTING
LOCATION: LV 5 ELEC RM B36
PHASES: 3
L-L VOLTS: 480
L-G VOLTS: 277
BUS AMPS: 100
AIC RATING: EXISTING
MAIN CB AMPS: 50

CLIENT: UCS TCL
MOUNTING SURFACE: LIGHTING & APPLIANCE
PANEL TYPE: BAC
ENGINEER: BAC
RMF PROJECT NO.: 312292 AD

PANEL NOTES:
1. EXISTING GE NHB PANELBOARD.

CND SIZE	CND SIZE	PHASE/NEUT. SIZE	CKT AMPS	LOAD DESCRIPTION	CB BKR. RATING (AMPS)/POLES	CIRCUIT NUMBER A B C	CB BKR. RATING (AMPS)/POLES	LOAD DESCRIPTION	CKT AMPS	PHASE/NEUT. SIZE	CND SIZE	CND SIZE
			0.00	MAIN	500		A -	SPACE	0.00			
			0.00	EX LTG	201		B -	SPACE	0.00			
			0.00	EX LTG	201		C -	SPACE	0.00			
			0.00	EX LTG - EQ RM	201	1 A 2	201	EX LTG - EQ RM	0.00			
			0.00	EX XFRM PNL E	150	3 B 4	201	EX EXIT LTG	0.00			
			0.00	EX LTG - MICRO FILM	201	5 C 6	201	EX EXIT LTG	0.00			
			0.00	EX LTG - PARKING LOT	201	7 A 8	300	SPARE	0.00			
			0.00	SPARE	201	9 B 10	201	EX EXIT WALL PACK	0.00			
			0.00	SPACE	-	11 C 12	201	SPACE	0.00			
			0.00	SPACE	-	13 A 14	-	SPACE	0.00			

LOADS	CONNECTED (KVA)	DIVERSITY FACTOR %	DEMAND (KVA) %
LIGHTING	0.00	100%	0.00
HVAC COOLING*	0.00	100%	0.00
HVAC HEATING*	0.00	100%	0.00
MOTORS	0.00	100%	0.00
KITCHEN EQUIPMENT	0.00	100%	0.00
RECEPTACLES (1st 10 KVA)	0.00	100%	0.00
RECEPTACLES (>10 KVA)	0.00	50%	0.00
MISCELLANEOUS	0.00	100%	0.00

* LOAD VALUES HAVE BEEN ADJUSTED TO REFLECT WORST CASE LOADING FOR EQUIPMENT WITH BOTH COOLING AND HEATING SYSTEMS.

PHASE LOADING			
PHASE	CONNECTED (KVA)	DEMAND (KVA)	DEMAND (AMPS)
A	0.00	0.00	0.00
B	0.00	0.00	0.00
C	0.00	0.00	0.00
A,B,C TOTALS	0.00	0.00	0.00

SCHEDULE KEY		
	PANEL BHA	PANEL EBHA